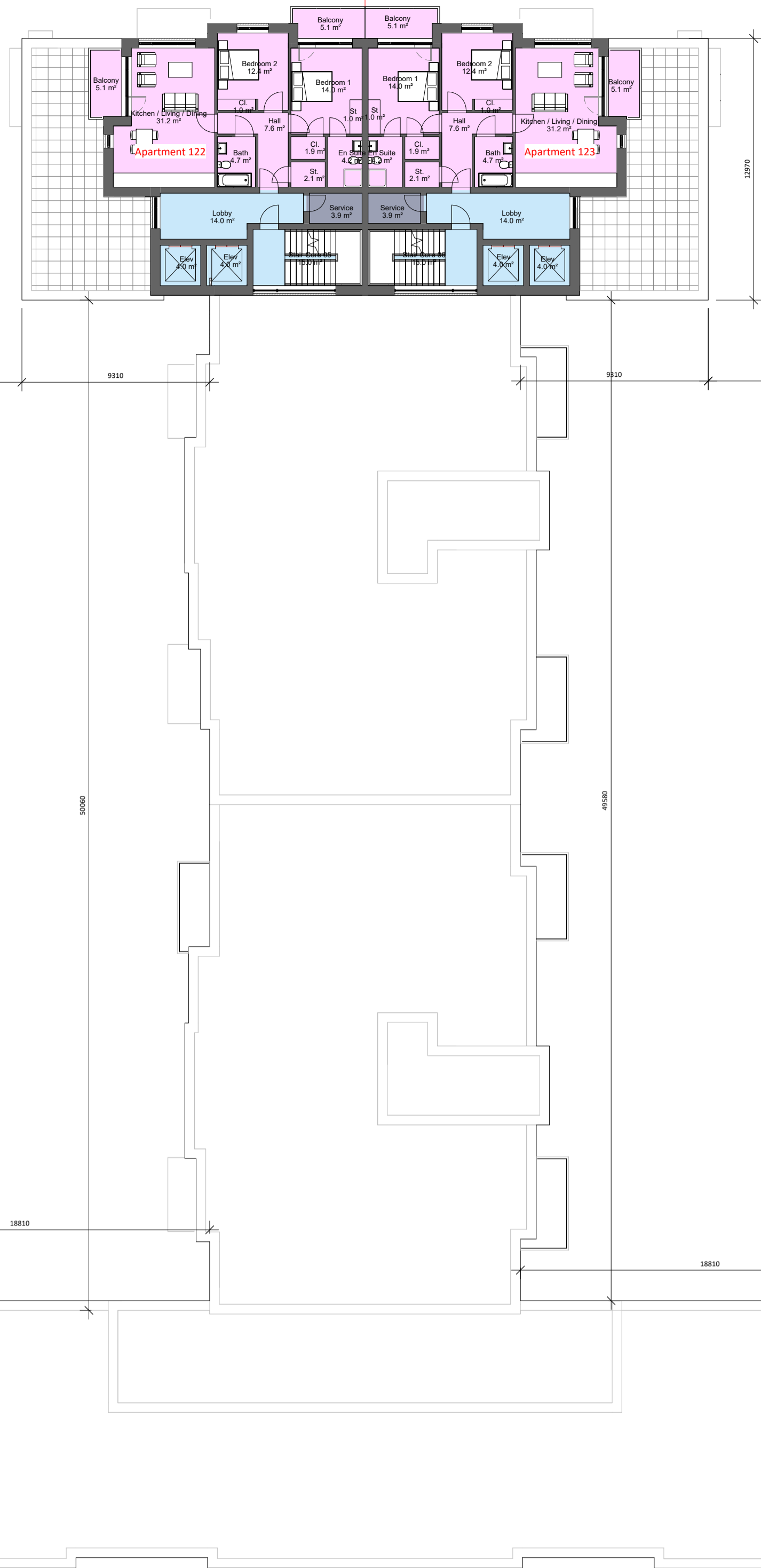
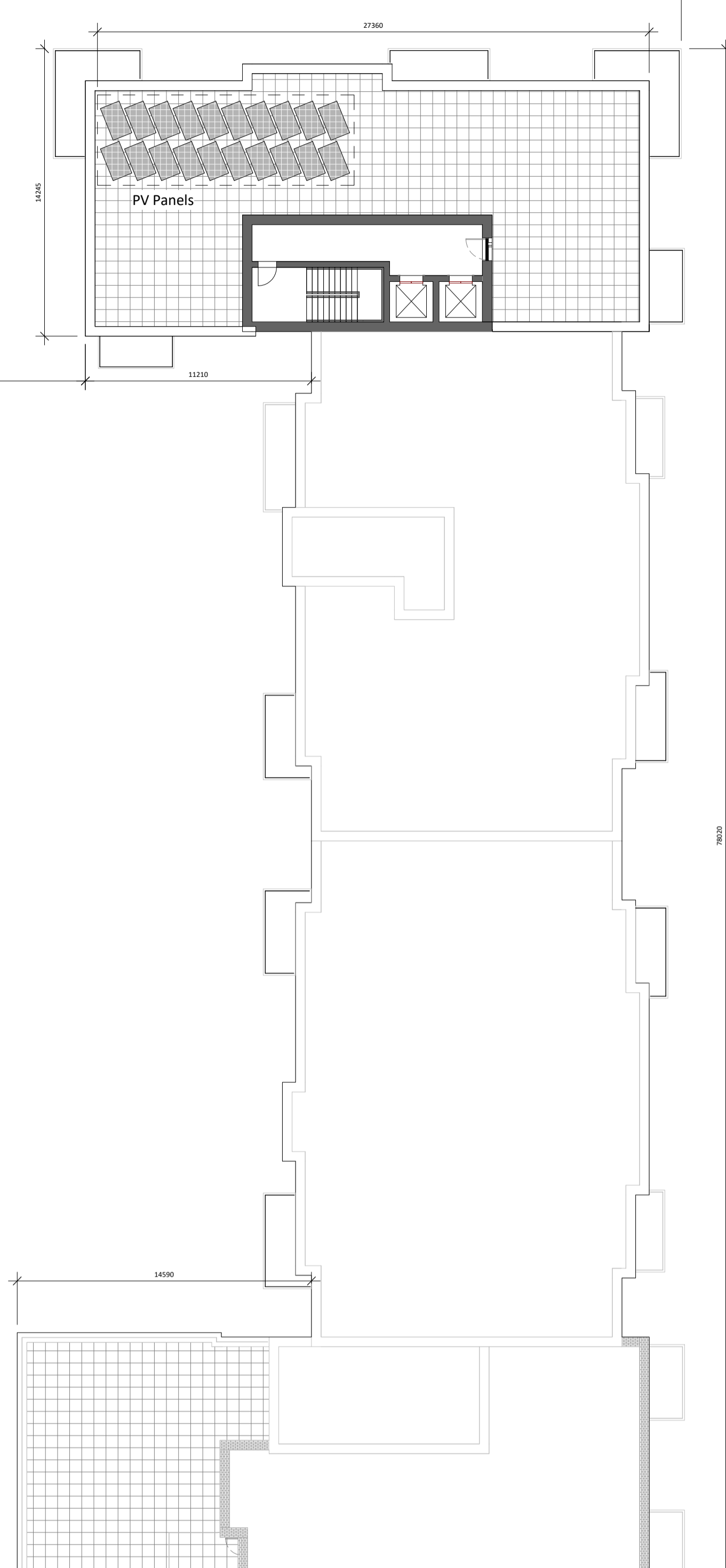


Sector 7 Block 1

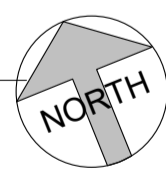


Sector 7 Block 2

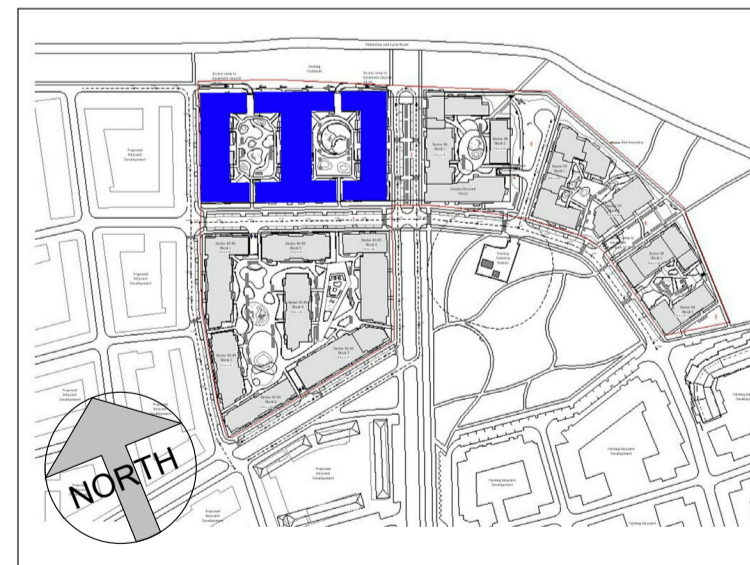


Sector 7 Block 3

1 11 TENTH FLOOR PLAN
1 : 200



Community rooms 2 rooms
Bicycle Storage at g.l. 424 units



StairCore	Studio	1 Bedroom	2 Bed 3 Person	2 Bed 4 Person	3 Bed	Total
1	0	4	4	25	0	33
2	6	2	6	13	0	27
3	5	1	5	12	0	23
4	0	0	0	15	0	15
5	0	6	0	11	1	18
6	0	6	0	11	1	18
7	2	12	2	17	1	34
8	2	10	2	13	0	27

StairCore	Studio	1 Bedroom	2 Bed 3 Person	2 Bed 4 Person	3 Bed	Total
9	0	3	0	8	3	14
10	0	3	0	8	3	14
11	0	0	0	30	0	30
12	7	2	7	15	0	31
13	6	1	6	14	0	27
14	0	10	0	12	0	22
Total:	28	60	32	204	9	333

Rev. No.	Date	By	Description
P01	17/12/2021		Issued for Planning
P03	11/03/2022		Issued for Planning

STATUS SUITABILITY CODES	NOTES:
S0	Work in progress
S1	Shared - for Co-ordination
S2	Shared - for Information
S3	Shared - for Review & Comment
S4	Shared - for Stage Approval
S6	Shared - for Project Information Model
S7	Shared - for Asset Information Model
D1	Suitable for Costing
D2	Suitable for Tender
D3	Suitable for Contractor Design
D4	Suitable for Procurement
An	Published - Approved & Accepted Complete
Bn	Published - Partially signed off with comments
CR	Published - Construction Record

CCH ARCHITECTS
Architects • Interior Designers • Masterplanners

Lacken House, Dublin Road, Kilkenny R95 KF34
Tel +353 (0)56 776 1591
E-Mail: info@cch-architects.com

© Drawing copyright CCH Architects Ltd. Not to be copied, reproduced or distributed without prior consent of CCH Architects Ltd.

stage	status	revision no.
PLANNING		P03
project ref.	20003	

CLIENT	PROJECT	DWG TITLE
LISMORE HOMES LTD	GA2;RESIDENTIAL DEVELOPMENT BALDOYLE	SECTOR 7_TENTH FLOOR
Date	17/12/21	drawing no.
Drawn	R RYAN	
Scale	1 : 200	BALN5 -CCH -00 -ZZ -DR -A -160